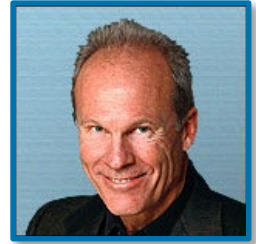




California Medical Evaluators
11620 Wilshire Blvd. Suite 340
Los Angeles, CA 90025
Phone: 888.853.7944
Fax: 213.478.0550
info@calmedeval.com



Dr. Mark Oakley, PhD

Board Certified in Psychology

Articulate, Board certified Psychologist with more than 35 years of clinical expertise and 1 year of medical-legal expertise. Highly specialized in Stress and Mood Management, Depression, Anxiety Disorders, and Behavioral Medicine.

EDUCATION

- **State University Of New York, Potsdam, NY (1979)**
Bachelor of Arts
- **University of Mississippi, Oxford, MS (1983)**
Master of Arts, Clinical Psychology
- **University of Mississippi, Oxford, MS (1985)**
Doctor of Philosophy, PhD, Clinical Psychology
- **VA Medical Center, MS (1985)**
Internship, Clinical Psychology
- **Center For Cognitive Therapy, Beverly Hills, CA (1987)**
Post-Doctoral Training, Cognitive Therapy
- **UCLA School of Medicine, Los Angeles, CA (1988)**
Post-Doctoral Training, Health Psychology

PROFESSIONAL EXPERIENCE

- **North Mississippi Retardation Center, Associate Psychologist (1983 to 1984)**
- **Center for Cognitive Therapy, Clinical Psychologist (1987)**
- **Pain Management Associates, Chief of Psychological Services (1987 to 2004)**
- **Center for Cognitive Therapy, Director (1987 to present)**

ACADEMIC APPOINTMENTS

- UCLA School of Medicine, Associate Clinical Professor (1988 to 2001)
- UCLA Department of Psychology, Associate Clinical Professor (1988 to 2002)
- UCLA Department of Psychology, Full Clinical Professor (2002 to present)

LICENSURE AND CERTIFICATION

- American Psychological Association
- California Board Certified Clinical Psychologist
- Exercise and Sport Psychology Association for Applied Sports Psychology
- Qualified Medical Evaluator (QME)

PROFESSIONAL MEMBERSHIPS

- Academy of Cognitive Therapy, Fellow

RESEARCH & PUBLICATIONS

- Shapiro, D., Hui, K.K., Oakley, M.E., Pasic, J., And Jamner, L.D. (1997). Reduction In Drug Requirements For Hypertension By Means Of A Cognitive-Behavioral Intervention. American Journal of Hypertension, VOL 10, #1, 9-17.
- Shapiro, D., Hui, K.K., Oakley, M.E., Pasic, J., And Jamner, L.D. (1995). Effectiveness Of A Combined Behavioral/Drug Intervention For Hypertension: Drug, Personality, And Quality Of Life Effects. In J.E. Dimsdale and A. Baum (Eds.), Perspectives On Behavioral Medicine, Erlbaum Associates, New York.
- Oakley, M.E., Mccreary, C.P., Clark, G.T., Holston, S.H., Glover, D., And Kashima, K. (1994). A Cognitive-Behavioral Approach to Temporomandibular Dysfunction Treatment Failures: A Controlled Comparison. Journal of Orofacial Pain, 8, 397-401.
- Jamner, L.D., Shapiro, D., Hui, K.K., Oakley, M.E., And Lovett, M. (1993). Hostility and Differences Between Clinic, Self-Determined, And Ambulatory Blood Pressure. Psychosomatic Medicine, 55, 203-211.
- Oakley, M.E., Mccreary, C.P., Clark, G.T., And Flack, V.F. (1993) Screening for Psychological Problems in Temporomandibular Disorder Patients. Journal of Orofacial Pain, 7, 143-149.
- Mccreary, C.P., Clark, G.T., Oakley, M.E., And Flack, V.F. (1992) Predicting Response to Treatment for Temporomandibular Disorders. Journal of Craniomandibular Disorders: Facial & Oral Pain, 6, No.3, 161-170.
- Mccreary, C.P., Clark, G.T., Merril, R.L., Flack, V. And Oakley, M.E. (1991) Psychological Distress

and Diagnostic Subgroups of Temporomandibular Disorder Patients. Pain, 44, 29- 34.

- Oakley, M.E. And Padesky, C.A. (1990) Cognitive Therapy for Anxiety Disorders. In M. Herson, R. Eisler, And P. Miller (Eds) Progress in Behavior Modification, Sage Publications, California. Volume 25, 11-46.
- Oakley, M.E. And Shapiro, D. (1989) Editorial Review: Methodological Issues In The Evaluation Of Drug-Behavioral Interactions In The Treatment Of Hypertension. Psychosomatic Medicine, 51, 269-276.
- Oakley, M.E., McCreary, C.P., Clark, G.T., Solberg, W.K., And Pullinger, A.G. (1989) Dentist Impressions Vs. Psychological Testing in TMD Patients. Journal of The American Dental Association, 118, 727-729.
- St. Lawrence, J.S., Mcgrath, M.L., Oakley, M.E., And Sult, S.E. (1983). Stress Management Training for Law Students: A Cognitive-Behavioral Intervention. Behavioral Sciences And The Law, 1, 101-110.