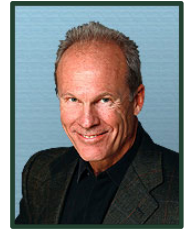




California Medical Evaluators
11620 Wilshire Blvd., Suite 340
Los Angeles, CA 90025
Ph: 888-853-7944
Fx: 213-478-0550
info@calmedeval.com



Mark Oakley, PhD, QME

Psychology

EDUCATION

- **UCLA School of Medicine**
Post-Doctoral Training in Health Psychology / Department of Psychiatry
10/1985 – 03/1988
- **Center For Cognitive**
Post-Doctoral Training, Therapy In Cognitive Therapy
10/1985 – 07/1987
- **University of Mississippi**
Ph.D, Clinical Psychology
09/1985
- **University of Mississippi**
M.A., Clinical Psychology
08/1983
- **State University Of New York**
B.A.
08/1979

WORK EXPERIENCE

- **UCLA Department of Psychology (2002 – Present)**
Full Clinical Professor
- **UCLA Department of Psychology (1995 – 2002)**
Associate Clinical Professor
- **UCLA Department of Psychology (1988 – 1995)**
Associate Clinical Professor
- **UCLA School of Medicine (1988 – 2001)**
Associate Clinical Professor
- **Center for Cognitive Therapy (1987 – Present)**
Director
- **Pain Management Associates (1987 – 2004)**
Chief of Psychological Services
- **UCLA School of Medicine (1985 – 1988)**
Post-Doctoral Scholar

Health Psychology/Behavioral Medicine

- **UCLA School Of Dentistry** (1985 – 1988)
UCLA Temporomandibular Joint and Facial Pain Clinic
- **Center for Cognitive Therapy** (1987)
Clinical Psychologist
- **V.A. Medical Center** (1984 – 1985)
Internship in Clinical Psychology
- **North Mississippi Retardation Center** (1983 – 1984)
Associate Psychologist

PROFESSIONAL CREDENTIALS

- Licensed Clinical Psychologist California License # PSY9870 March, 1987 To Present
- American Psychological Association Division 38: Health Psychology
- Division 47: Exercise and Sport Psychology Association for Applied Sport Psychology (AASP)
- Qualified Medical Examiner QME# 001060

PUBLICATIONS

- Shapiro, D., Hui, K.K., Oakley, M.E., Pasic, J., And Jamner, L.D. (1997). Reduction In Drug Requirements For Hypertension By Means Of A Cognitive-Behavioral Intervention. American Journal of Hypertension, VOL 10, #1, 9-17.
- Shapiro, D., Hui, K.K., Oakley, M.E., Pasic, J., And Jamner, L.D. (1995). Effectiveness Of A Combined Behavioral/Drug Intervention For Hypertension: Drug, Personality, And Quality Of Life Effects. In J.E. Dimsdale and A. Baum (Eds.), Perspectives On Behavioral Medicine, Erlbaum Associates, New York.
- Oakley, M.E., Mccreary, C.P., Clark, G.T., Holston, S.H., Glover, D., And Kashima, K. (1994). A Cognitive-Behavioral Approach to Temporomandibular Dysfunction Treatment Failures: A Controlled Comparison. Journal of Orofacial Pain, 8, 397-401.
- Jamner, L.D., Shapiro, D., Hui, K.K., Oakley, M.E., And Lovett, M. (1993). Hostility and Differences Between Clinic, Self-Determined, And Ambulatory Blood Pressure. Psychosomatic Medicine, 55, 203-211.
- Oakley, M.E., Mccreary, C.P., Clark, G.T., And Flack, V.F. (1993) Screening for Psychological Problems in Temporomandibular Disorder Patients. Journal of Orofacial Pain, 7, 143-149.
- Mccreary, C.P., Clark, G.T., Oakley, M.E., And Flack, V.F. (1992) Predicting Response to Treatment for Temporomandibular Disorders. Journal of Craniomandibular Disorders: Facial & Oral Pain, 6, No.3, 161-170.
- Mccreary, C.P., Clark, G.T., Merril, R.L., Flack, V. And Oakley, M.E. (1991) Psychological Distress and Diagnostic Subgroups of Temporomandibular Disorder Patients. Pain, 44, 29- 34.
- Oakley, M.E. And Padesky, C.A. (1990) Cognitive Therapy for Anxiety Disorders. In M. Herson, R. Eisler, And P. Miller (Eds) Progress in Behavior Modification, Sage Publications, California. Volume 25, 11-46.
- Oakley, M.E. And Shapiro, D. (1989) Editorial Review: Methodological Issues In The Evaluation Of Drug-Behavioral Interactions In The Treatment Of Hypertension. Psychosomatic Medicine, 51, 269-276.

California Medical Evaluators

P: (888) 853-7944 F: (866) 288-9958

11620 Wilshire Blvd Ste. 340 Los Angeles CA 90025

- Oakley, M.E., McCreary, C.P., Clark, G.T., Solberg, W.K., And Pullinger, A.G. (1989) Dentist Impressions Vs. Psychological Testing in TMD Patients. Journal of The American Dental Association, 118, 727-729.
- St. Lawrence, J.S., Mcgrath, M.L., Oakley, M.E., And Sult, S.E. (1983). Stress Management Training for Law Students: A Cognitive-Behavioral Intervention. Behavioral Sciences And The Law, 1, 101-110.

**INVITED BOOK
REVIEW**

- Cognitive Therapy For Chronic Pain: A Ten Session Manualized Treatment Program Beverly Thorn, Ph.D.
- Guilford Press: Invited Review By Senior Editor (Psychology), Guilford Press. 10/03.