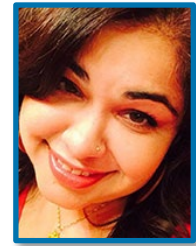




**California Medical Evaluators**  
11620 Wilshire Blvd. Suite 340  
Los Angeles, CA 90025  
**Phone:** 888.853.7944  
**Fax:** 213.478.0550  
info@calmedeval.com



## **Dr. Shivani Patel Escamilla, PsyD** *Licensed Psychologist*

### **EDUCATION**

---

- **American School of Professional Psychology, Argosy University, Santa Ana, CA (2009)**  
Doctorate of Psychology (PsyD)
- **University of Southern California, Los Angeles, CA (2000)**  
Master of Healthcare Administration (MHA)  
*Certificate: Ambulatory Care Systems Management, Dean's Merit Scholar*
- **University of California, Irvine, Irvine, CA (1997)**  
Bachelors in Psychology/Social Behavior and Political Science  
*Dean's Honor List*

### **PROFESSIONAL EXPERIENCE**

---

- **Lagos Administrator, Telecare Riverside County Crisis Residential Program (2019-present)**  
*Telecare Corporation*
  - Plans, organizes, directs, and controls all aspects of administrative functions and rehabilitative interventions at our 24 hr, 7 day/wk crisis stabilization program;
  - Implements program policies and procedures and serves as Program Privacy officer in order to ensure compliance with HIPAA regulations; Develops and manages all strategic planning activities;
  - Collaborates with State/County and local agency representatives; Serves as liaison between Telecare corporate office, program and State/County customers and community partners to best serve program residents;
  - Establishes staffing requirements; Directs recruitment, selection and disciplinary action of all staff;
  - Manages the program budget and fiscal activities, including revenue, expenses and billing;
  - Supervises all department managers and maintains supervisory authority over personnel assigned to all functions within the departments, including supervising pre-licensed and licensed clinical and rehabilitative staff;

- Ensures program compliance with Telecare standards, as well as all applicable laws and regulations; implements and maintains corporate initiatives and best practices;
- Establishes a program culture of service and recovery-oriented standards of care.
- **Clinical Director, Older Adult Prevention & Early Intervention (PEI) Program (8/2015)**  
*Telecare Corporation Los Angeles County Older Adult (LAOA) Program, Service Areas 7 & 8*
  - Plans, implements and administers all clinical services and related administrative practices for an integrated, community-based team comprised of inter-disciplinary staff, interns and Master's level clinicians who provide field-based therapeutic services to older adults with complex mental health and medical conditions;
  - Supervises psycho-therapy (individual & group) related services and inter-disciplinary staff, crises response, assessment, case management & treatment planning services for all PEI clients; Oversees quality assurance related activities; Conducts trainings and presentations at community events and professional conferences;
  - Facilitates weekly treatment team and supervision meetings, as well as professional development trainings;
  - Represents LAOA programs on county wide community-based and DMH committees;
  - Coordinates clinical activities and assumes responsibilities of the Program Administrator as needed;
  - Serves as back up and on-call supervisor for the Telecare LAOA Older Adult FSP & FCCS Programs.
- **Program Coordinator & Clinical Psychologist II, Child Welfare Division (2013-2015)**  
*LA County Department of Mental Health (DMH) County-Wide Treatment Foster Care Program*
  - Developed training curricula & conducted trainings on trauma and best practice treatment interventions for work with complex trauma victims and their families; Provide clinical consultation regarding treatment and EPSDT billing guidelines and procedures; Facilitated stakeholder implementation of train the trainer models;
  - Completed special projects and program administrative activities; Conducted Program Improvement Reviews of contracted agencies to assist with DMH quality assurance efforts;
  - Coordinated county-wide foster parent recruitment efforts and marketing strategies for intensive foster care treatment program; Led interagency workgroup aimed at improving performance in different domains.
- **Clinical Psychologist II**  
*LA County Department of Mental Health Psychiatric Mobile Response Team SA7, Cerritos, CA*
  - As an LPS designated clinician, performed field-based diagnostic evaluations of children and adults in order to determine danger to self/others or grave disability for involuntary detention at a psychiatric facility;
  - Provided intensive crisis stabilization, consultation, brief therapy and risk management services, including joint response with DCFS social worker and case management and linkage to community-based support services; Followed up on high risk cases to ensure client stabilization post discharge from hospital;
  - Consulted and collaborated with inter-disciplinary team members and professionals from other agencies (i.e. Social Services, School, DMH Child Welfare Division, Hospitals etc.);

- Served as Quality Assurance Coordinator and informal supervisor for psychology and social work interns.
- **Supervising Psychologist and Practice Administrator (2010-2011)**  
*Sovereign Health of California, San Clemente, CA*
  - Provided program development & administrative oversight, including utilization review and peer to peer consultations with insurance company officers; State Certified Administrator of licensed residential facility;
  - Served as licensed clinical supervisor of practicum, pre and post-doctoral psychology interns; Facilitated weekly treatment team, clinical conference and trainings in complex trauma & health psychology;
  - Conducted psycho-therapy (individual & group), crises response, assessment, case management & treatment planning services for dual diagnosis, chronic pain and eating disordered clients with high levels of acuity;
  - Consulted with inter-disciplinary team members and other adjunctive professionals providing biofeedback, acupuncture, nutrition services to ensure comprehensive and coordinated treatment program.
- **Post-Doctoral Scholar/Fellow: UCSF HEARTS Program (2009-2010)**  
*Child & Adolescent Service, Dept. of Psychiatry, UCSF General Hospital*
  - UCSF Healthy Environments and Response to Trauma in Schools (HEARTS) is a program that works in conjunction with the San Francisco Unified School District to increase awareness, build capacity and improve systemic responses to complex trauma victims and their families;
  - Weekly caseload of 10 complex trauma child and adolescent clients and their families; Provided psycho-therapy (individual & group), crisis, case management & treatment planning services in hospital and school settings; Conducted psychological assessments;
  - Program development & program management; Consulted and collaborated with inter-disciplinary team members; Participated in weekly clinical conferences/didactic trainings;
  - Supervised practicum student in clinical practice; Collected data on client progress for research purposes;
  - Provided professional development trainings in complex trauma & health psychology;
  - Certified in Avatar & Child Assessment of Needs & Strengths (CANS) assessment/treatment protocols.
- **Pre-Doctoral Psychology Intern (2008-2009)**  
*San Bernardino County Dept. of Behavioral Health APA Internship Program*
  - Weekly caseload of 25 clients; Specific requirements include: 15 intakes, 12 batteries (adult, child, forensic), 400 therapy hours (group, individual, family, elderly), crisis intervention, case mgmt, 25 recorded sessions and case presentations, 2 consultations, providing supervision to Masters level intern and completing a 40 hr research project; Co-lead weekly therapeutic groups with child, geriatric and co-occurring clients;
  - Conducted intakes and integrative psychological assessments in forensic settings and reported findings and made treatment recommendations during Superior Court proceedings;

- Collaborated with inter/intra disciplinary treatment teams including psychiatrists, crisis responders, school psychologists, hospital-based physicians, probation officers etc.; Consulted and assisted with treatment planning at IEP and social service-related meetings; Attended inter-agency and county-level clinical trainings;
- Total pre-doctoral internship included 2009 hours.
- **Therapy Practicum Intern (2007-2008)**  
*Long Beach Child & Adolescent Clinic, LA Dept. of Mental Health*
  - Under licensed clinical supervision, conducted clinical intake assessments and provided psychotherapy (individual, family & group) to children, adolescents and CALWORKS Program adult clients; Average weekly case load of 10 clients (5 child, 5 adult);
  - Collaborated with psychiatrists, social workers, teachers, pediatricians, probation officers etc. and attended WRAP and DCSF meetings to consult and assist with treatment planning;
  - Attended monthly inter-agency and county-level didactics and trainings on interventions and assessment.
- **School Counselor/Therapist: Elementary School Program (2007-2008)**  
*Straight Talk Inc., Cypress, CA*
  - Under licensed clinical supervision, conducted clinical intake assessments and provided weekly psycho-therapy, crisis intervention and case management services in multiple, public elementary-school settings;
  - Assisted students with life stressors and relational issues, as well as behavioral and impulse control problems, grief/loss issues and involvement with drugs or alcohol; Conducted workshops;
  - Provided trainings and consulted and collaborated with inter-disciplinary staff and school administrators.
- **Court Appointed Special Advocate (CASA): Infant Adoption Program (2006-2009)**  
*Orange County CASA Program, Santa Ana, CA*
  - As directed by Orange County's Dependency Court, mentored and advocated for children in the foster care system; Consulted and collaborated with attorneys, social workers and therapists under direction of CASA case supervisor; Submitted court reports & made recommendations for child placement;
  - Attended 40+ hours of annual trainings on topics such as child development, abuse & forensic psychology.
- **Diagnostic Practicum Intern (2006-2007)**  
*Argosy University Orange County Assessment Service, Santa Ana, CA*
  - Under licensed clinical supervision, conducted diagnostic & collateral interviews, performed psycho-diagnostic and psycho-educational testing to college population compromised of varying ages, cognitive and emotional issues and learning disabilities; Provided crisis intervention and short-term therapy;
  - Via consultation and collaboration with referring counselors, provided therapeutic recommendations and feedback for educational accommodations, remediation and/or psychotherapeutic interventions;

- Participated in weekly case conferences with referring school counselors, as well as didactic and group seminars and weekly individual and group supervision.
- **Child Counselor (1998-1999)**  
*Children of the Night, Van Nuys, CA*
  - Handled all incoming calls to center's national teen hotline; provided crisis intervention and resource referrals;
  - Responsible for intake, supervision and assessment of shelter residents with efforts aimed at assisting victims of rape and child abuse, as well as child prostitution and pornography; Coordinated emergent child-rescue efforts involving undercover policemen and workers from child-protective services.
- **Health Administrative Intern & Lend Trainee (1998-1999)**  
*Children's Hospital Los Angeles Center for Child Development and Disabilities, Los Angeles, CA*
  - Completed projects relating to operations, finance and strategic planning; Under direction of Clinic Director, successfully developed & proposed application for APA accreditation of Pre-Doctorate Program;
  - As Lend Trainee, participated in hospital fellowship program aimed at increasing awareness of county and state clinical treatment, case management and reimbursement programs for developmentally challenged and low-income children; Participated in case-study conferences; Developed & presented treatment plans.

## HEALTH ADMINISTRATIVE BACKGROUND

---

- **Practice Management Consultant (2005-2006)**  
*Med America/California Emergency Physicians, Emeryville, CA*
  - Provided management services for 11 multi-million dollar emergency department (ED) contracts;
  - Built functional expertise in value-added services such as Operational Assessment, Process Redesign, Service Excellence Initiatives, Regulatory Issues and EDIS; Developed strategic balanced scorecards to monitor and report upon ED performance; Collaborated with CEP Regional and Medical Director leadership by bringing business acumen and a hospital administrator's perspective;
  - Coached ED physicians on operations, performance and other strategic issues; Promoted best practices; Identified areas needing improvement and developed and project managed corrective action plans; Facilitated ED led hospital-wide committees.
- **Business Process Consultant (2004-2005)**  
*Franchise Performance Group of United Healthcare, Edina, MN*
  - As a six-sigma black belt, diagnosed process improvement opportunities for business problems and developed and implemented fully integrated solutions using process excellence principals & tools;
  - Provided project management, program management & internal consulting services to senior leadership and staff of multiple service departments and businesses across enterprise.

- **Practice Manager (2003-2004)**  
*Fertility, Gynecology & Gynecologic Oncology, Virginia Mason Hospital, Seattle, WA*
  - Responsible for all administrative functions of three surgical specialty practices in areas of operations, marketing, facilities, finance, human resources (40+ clinical/non-clinical staff), and planning & development;
  - Developed and implemented clinic policies to heighten quality and consistency of service; Oversaw patient flow and billing prior to and after surgery in cooperation with staff and department teams throughout hospital and healthcare system; Managed multi-million dollar budget; Conducted accurate forecasting of staffing, capital and operations budget needs within context of market position and financial situation.
- **Project Manager, Integrated Managed Care Services (2000-2003)**  
*Healthcare Partners, Torrance, CA*
  - Project Manager of Eligibility, Claims, Contracting & Referral Management initiatives;
  - Facilitated corporate LEAN Work Process Improvement Initiatives aimed at redesigning and automating core managed care business processes by utilizing web-based technologies;
  - Evaluated operational, financial & systems performance.
- **Residential Counselor and Assistant Administrator (1997-1998)**  
*Wellsprings Skilled Residential Care Facility, Bakersfield, CA*
  - As counselor, provided crisis intervention and weekly group-counseling sessions;
  - As Assistant Administrator, conducted intakes and processed referrals; Assisted with daily operational and financial performance; Completed projects related to QA, marketing, collections, budgeting and cost management; Developed & implemented resulting action plans with owners and treatment team staff.

## COMMUNITY LEADERSHIP & AFFILIATIONS

---

- Orange County Association of Play Therapy (OC APT)
- American Psychological Association (APA)
- California Psychological Association (CPA)
- Pi Alpha Alpha, National Public Administration Honors Society
- Phi Sigma Alpha, National Political Science Honors Society
- American College of Health Care Executives (ACHE)
- Chair Mentoring Program & Services, USC MHA Student Council (1999 – 2000)

## PROFESSIONAL TRAINING/SEMINARS PRESENTED

---

*“Understanding the Needs of Older Adults & How Faith Helps: - Los Angeles County Department of Mental Health, Los Angeles CA. (October 17, 2017)*

*“Trauma Informed Parenting” – CASA Orange County, Santa Ana, CA (September 11, 2017)*

*“Suicide Prevention with Older Adults” – Whittier Community Services Center, Whittier CA (January 18, 2017)*

*“Understanding & Preventing Elder Abuse”* – Presented at various community-based organizations on behalf of Telecare Los Angeles Older Adult PEI Program (August 14, 2017, June 16, 2017, February 8, 2017)

*“Maximizing Seeking Safety Outcomes with Latino Older Adults”* – California Institute for Behavioral Health Solutions 2017 Evidenced-Based Practices Symposium Los Angeles County (April 5, 2017)

*“Suicide Risk Assessment & Prevention with Older Adults”* – Promising Practices Conference, Los Angeles, CA (January 18, 2017)

*“Trauma Basics”* – Telecare Older Adult PEI Program, Los Angeles CA. (May 20, 2015);

*“Promoting Psychological Resilience & Staff Self Care Workshop”* – Telecare Older Adult PEI Program, Norwalk, CA. (December 21, 2015)

*“Fostering Resiliency, Retention & Trauma Informed Practice in TFC Foster Parents”* - Los Angeles County Department of Mental Health, Los Angeles CA. (January 20, 2015)

*“Understanding Attachment with TFC Youth”* - Los Angeles County Department of Mental Health, Los Angeles CA Treatment Foster Care Foster Parent Training Conference (February 10, 2015)

*“Trauma Basics”* – Los Angeles County Department of Mental Health, Los Angeles CA. (January 17, 2014; January 28, 2014; March 10, 2015)

*“Promoting Psychological Resilience in Intensive in Home Staff Self Care Workshop”* – Child Net, Long Beach CA. (January 27, 2014)

*“Promoting Psychological Resilience in Intensive in Home Staff Self Care Workshop”* – Los Angeles County Department of Mental Health, Los Angeles CA. (February 18, 2014 & February 27, 2014)

*“Impact of Trauma Disruptions on Child Development & Attachment”* – Los Angeles County Department of Mental Health, Los Angeles CA. (March 17, 2014 & March 26, 2014)

*“Reaching Children Thru Play”* – Co-Presenter for Los Angeles County Department of Mental Health, Los Angeles CA. (April 14, 2014)

*“Shared Core-Practice, Intensive Care Coordination (ICC) and Intensive Home Based Services for Treatment Foster Care”* – Los Angeles County Department of Mental Health, West Covina CA. (May 12, 2014)

*“Crisis Prevention & De-Escalation”* – Los Angeles County Department of Mental Health, Los Angeles CA (July 15, 2014; October 1, 2014)

*“Crisis Intervention & Stabilization”* – Los Angeles County Department of Mental Health, Los Angeles CA (August 21, 2014; October 20, 2014)

## RESEARCH EXPERIENCE

---

American School of Professional Psychology Argosy University with M. Ybaben, Ph.D., 2007 - 2009

*Research Area:* Qualitative Analysis of Cognitive Schemas & Eating Disorders

*Title and Duties:* **Primary Researcher, Clinical Research Project/Dissertation**

- Conducted qualitative interviews with college students diagnosed with eating disordered behaviors in order to identify maintaining factors and schema processes that sustain

maladaptive tendencies despite intervention. Delineated recurrent themes using a biopsychosocial framework; critically evaluated and correlated results to current research findings.

- Presented findings via poster presentation at the California Psychological Association (CPA) and Western Psychological Association (WPA) Annual Conventions in March and April, 2009.

University of California, Los Angeles with A. Dechairo, Ph.D. Candidate 1998-1999

*Research Area:* Effects of Nursing Case Management on Patient Health Outcomes

*Title and Duties (paid position):* **Research Assistant**

- Consented and debriefed subjects; Conducted structured interviews with tertiary-level patients before & after discharge at 5 major southern California acute-care hospitals; Assisted with statistical analyses of findings.

University of California, Irvine with A. Clarke-Stewart, Ph.D. and R. Beck, Ph.D.: NICHD Study, 1996-1998

*Research Area:* Mother-Child Narrative Interactions/Scaffolding

*Title and Duties (volunteer position):* **Research Assistant**

- Customized system of coding mother-child narrative interactions; Interpreted protocols, collected and analyzed statistical data; Developed and presented findings of final research report;
- Results were published and I was given an honorable mention in the following article: Beck, R & Clarke-Stewart, K.A. (1998) Improving 5-year-olds' narrative recall and comprehension. *Journal of Applied Developmental Psychology*, 19 (4), 543 – 569.

University of California, Irvine with Larry Jamner, Ph.D.: Clinical-Health Study, 1996-1997

*Research Area:* Impact of job-related stressors on physical well-being of police officers

*Title and Duties (volunteer position):* **Research Assistant**

- Interpreted result protocols from interviews with police officers; Collected and analyzed statistical data;
- Identified and documented common themes related to life-style factors, eating and physical activity patterns.

University of California, Irvine with Carol Whalen, Ph.D.: MABS Study, 1996-1997

*Research Area:* Attention styles of undergraduate students

*Title and Duties (volunteer position):* **Research Assistant**

- Recruited undergraduate students to participate in study of attentional/impulsivity styles via the Continuance Performance Task; Consented and debriefed subjects; Summarized experiment effectiveness in final report.