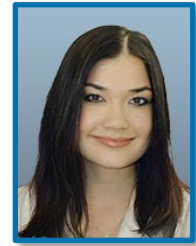




California Medical Evaluators
11620 Wilshire Blvd. Suite 340
Los Angeles, CA 90025
Phone: 888.853.7944
Fax: 213.478.0550
info@calmedeval.com



Dr. Nina Dang, DC, LAc
Licensed Chiropractor and Acupuncturist

EDUCATION

- **Kaplan University (2013)**
Master of Science in Psychology, emphasis in Applied Behavioral Analysis, GPA 4.0
- **Southern California U. of Health Sciences, College of Acupuncture & Oriental Medicine (2009)**
Master of Acupuncture & Oriental Medicine, Summa Cum Laude, Valedictorian
- **Southern California University of Health Sciences, Los Angeles College of Chiropractic (2009)**
Doctor of Chiropractic
- **University of California, Berkeley (2005)**
Bachelor of Arts, Integrative Biology (Dean's List)

PROFESSIONAL/TEACHING EXPERIENCE

- **NU Integrative Wellness** – Acupuncturist, Chiropractor, Esthetician (2010-present)
- **Exam Specialists** – Lead SIBTF Evaluator (2017-present)
- **Safety Works, Inc.** – Functional Capacity Evaluator (2011-2013)
- **Quality Assurance Quality Control (QAQC), Initial Clinical Reviewer (ICR) and Administrative Process (AP), Comprehensive Industrial Disability Management (CID Mgmt)** – (2010-2019)
- **Kaplan Online University** – Online Adjunct Professor (2010-2015)
- **Cypress Community College** – Adjunct Faculty (2009)
- **Southern California University** – Teaching Preceptorship (2009)

LICENSURE AND CERTIFICATION

- Diplomat, National Board of Chiropractic Examiners

- Doctor of Chiropractic, California State Board of Chiropractic Examiners
- Licensed Acupuncturist, State of California Acupuncture Board
- Qualified Medical Evaluator (QME)
- Certified Functional Capacity Evaluator, approved by the Canadian Memorial Chiropractic College & Safety Works, Inc.
- Esthetician, California Board of Barbering and Cosmetology

HONORS & AWARDS

- Dean's list, SCU
- SCU Summa Cum Laude/Valedictorian
- Delta Tau Alpha (DTA): an Honors Fraternity
- Dr. Shui-Sheng Wu's Scholarship Fall 2008
- SCU Alumni Scholarship Spring 2008
- SCU Mindlin Book Scholarship (7 consecutive terms)
- UC Berkeley Premedical Program (PMP): Spring 2005
- UC Berkeley Biology Scholars Program (BSP) Funded by the Howard Hughes Medical Institute and the Gordon and Betty Moore Foundation Fall 2002 – Spring 2005
- UC Berkeley Women in Science and Engineering (WiSE) Residential Theme Program: Fall 2002, Spring 2003
- UC Berkeley Class of 1908 Scholar, Barrett, Edward Scholar, Chapin-Herron Scholarship Fall 2001

WRITING EXPERIENCE

SCU *Campus Connections* Contributor Spring 2007 – Spring 2008

University of California, Berkeley. *Issues, Berkeley Medical Journal* Published Staff Writer, Spring 2002 Issue

PEER-REVIEWED PUBLICATIONS

Eric Lung-Cheng Hsiao, Lung-Sheng Hsiao, Sivarama Prasad Vinjamury, **Nina La**, Wen-Shuo Wu, and Chiao-Nien Wang. Immunological Effects of Yu Ping Feng San (Jade Windscreen Powder) - A Review. *Chinese Medicine*

Lung-Sheng Hsiao, Sivarama Prasad Vinjamury, Eric Lung-Cheng Hsiao, **Nina La**, and Wen-Shuo Wu. Effectiveness and Safety of Traditional Chinese Medicine for Insomnia: A Literature Review. *Journal of Alternative and Complementary Medicine*