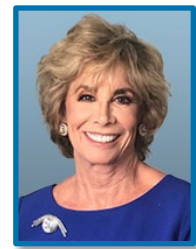




**California Medical Evaluators**  
11620 Wilshire Blvd. Suite 340  
Los Angeles, CA 90025  
**Phone:** 888.853.7944  
**Fax:** 213.478.0550  
info@calmedeval.com



**Dr. Carol Soloway, DC**  
*Licensed Doctor of Chiropractic*

## EDUCATION

---

- **Los Angeles Chiropractic College**, Los Angeles, CA (1983)  
Doctor of Chiropractic
- **Queens College**, Queens, NY (1971)  
MS, English Education
- **New York University**, New York, NY (1967)  
BS, English Education

## PROFESSIONAL EXPERIENCE

---

- **State Compensation Insurance Fund** (1995-2011)
  - Chiropractic Consultant performing file and peer-to-peer reviews
- **State Board Chiropractic Examiner** (1998-present)
- **Total Healthcare Management** (2004-2010)
  - Performing reviews of industrial cases reviewed for municipalities and other contracts
- **Beach Street** (1991-1998)
  - Assisted with chiropractic portion of URAC Accreditation Process
  - Created chiropractic early intervention program for industrial cases
  - File and bill review for industrial and personal injury cases
- **Westview Medical Corporation** – injured worker QMEs and AMEs (1985-1988)
- **RehabWest** – File and peer-to-peer reviews of Workers' Compensation cases (2005-present)
- **MES Medical Evaluation Solutions** – IMEs (2004-present)

## LICENSURE AND CERTIFICATION

---

- California Chiropractic License (1983)
- California X-Ray Supervisor and Operator License (1983)
- Independent Medical Examiners Certificate (1987)
- State Appointed Qualified Medical Examiner (1988)

- Certified Managed Care Credentials (1996)
- AMA Disability Evaluation (2004)
- Subsequent Injuries Benefits Trust Fund Examiner (2017)

## PROFESSIONAL MEMBERSHIPS

---

- Academy of Forensic & Industrial Chiropractic Consultants – Lecturer & Board Member (1998-2008)
- California Chiropractic Association – Board Member (2003-2005)
- International Association of Women, Orange County, CA – President (2015-present)