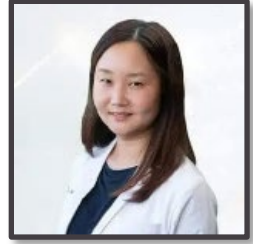




California Medical Evaluators
11620 Wilshire Blvd. Suite 340
Los Angeles, CA 90025
Phone: 888.853.7944
Fax: 213.478.0550
info@calmedeval.com



Dr. Janice Joo, MD, QME

Board Certified in Psychiatry and Neurology

Articulate, Board certified Psychiatrist with more than 5 years of clinical expertise and 1 year of medical-legal expertise. Highly specialized in Epilepsy and Neurology.

EDUCATION

- **Pomona College, Claremont, CA (2011)**
Bachelor of Arts, Molecular Biology
- **Rosalind Franklin University of Medicine and Sciences, Chicago, IL (2016)**
Doctor of Medicine, MD
- **Advocate Lutheran General Hospital, Park Ridge, IL (2017)**
Internship, Internal Medicine
- **University of Southern California, Los Angeles, CA (2020)**
Residency, Neurology
- **University of California, Los Angeles, CA (2022)**
Fellowship, Neurophysiology and Epilepsy

PROFESSIONAL EXPERIENCE

- **West Coast Neurology, Epileptologist and General Neurology (2022 to present)**

LICENSURE AND CERTIFICATION

- American Board of Psychiatry and Neurology, Neurology
- American Board of Psychiatry and Neurology, Neurophysiology
- California Board Certified Medical License

PROFESSIONAL MEMBERSHIPS

- American Epilepsy Society
- American Academy of Neurology
- American Clinical Neurophysiology Society

FLUENT LANGUAGES

- English
- Korean

RESEARCH & PUBLICATIONS

Research

- **Pomona College Student Research (2008-2011)**
Thesis: "Mechanisms of Meiotic Resetting in *S. cerevisiae*"
Howard Hughes Medical Institute grant
- **National Institutes of Health (NIH) Postbaccalaureate**
Intramural Research Training Award at the National Institutes of Drug Abuse (2011-2012)
- **Involved in research at USC evaluating EEG patterns in the neurologic ICU (2017-2020)**
- **Involved in research at the West LA VA (2021)**
Principal Investigator: Dr. James Chen, MD PhD
Grant title: "The Genetic Factor and Altered EEG Network in the Development of Post-Traumatic Epilepsy", funded by DOD (CDMRP)