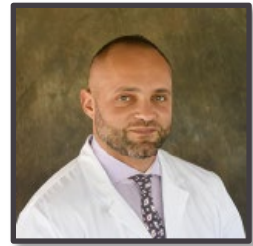




California Medical Evaluators  
11620 Wilshire Blvd. Suite 340  
Los Angeles, CA 90025  
Phone: 888.853.7944  
Fax: 213.478.0550  
info@calmedeval.com



## **Dr. Mohamed S. Elsharif, MD, QME**

*Board Certified in Neurology*

*Articulate, Board certified Neurologist with more than 10 years of clinical expertise and 1 year of medical-legal expertise. Highly specialized in Diagnosing and Treating Diseases of the Brain, Spinal Cord, and Nerves.*

### **EDUCATION**

---

- **University of Minnesota, Minneapolis, MN (2003)**  
Bachelor of Science, Genetics and Cell Biology
- **Penn State College of Medicine, Hershey, PA (2011)**  
Doctor of Medicine, MD
- **Stony Brook University Hospital, Stony Brook, NY (2012)**  
Residency, Internal Medicine
- **Rutgers-Robert Wood Johnson, New Brunswick, NJ (2015)**  
Residency, Neurology

### **PROFESSIONAL EXPERIENCE**

---

- **Salem Hospital, Neurologist (2015 to 2017)**
- **Oregon Health & Science University School of Medicine, Assistant Professor (2016 to 2017)**
- **Beaver Medical Group, Neurologist (2018 to present)**

### **ACADEMIC APPOINTMENTS**

---

- **Oregon Health & Science University School of Medicine, Assistant Professor (2016 to 2017)**

### **LICENSURE AND CERTIFICATION**

---

- American Board of Psychiatry & Neurology

- California Board Certified Medical License

## **PROFESSIONAL MEMBERSHIPS**

---

- American Academy of Neurology
- American Medical Student Association
- Penn State College of Medicine Business Academic Club, Co-Founder

## **RESEARCH & PUBLICATIONS**

---

### **Research**

University of Minnesota, Biology Lab Instructor (2001 to 2002)

University of Minnesota, Alex Lange, Preceptorship (2003)

Penn State College of Medicine, Khaled Sedeek, Preceptorship (2010)

Robert Wood Johnson Rutgers, Patrick Gainey, Preceptorship (2014)